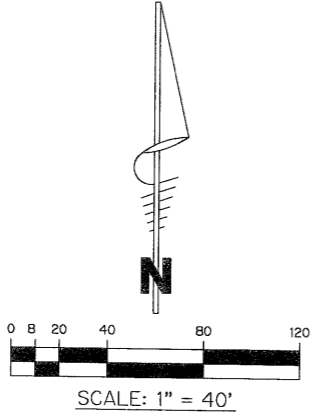


EQUUS AGR - PUD PHASE FOUR

BEING A REPLAT OF ALL OF TRACTS 110 AND 111, AND A PORTION OF TRACTS 112 THROUGH 116, BLOCK 45; A PORTION OF TRACTS 14 AND 15, BLOCK 51; THAT PORTION OF THE 50' ROAD LYING BETWEEN SAID BLOCKS 45 AND 51 ABUTTING SAID TRACTS; AND THE EAST 12.5 FEET OF THE 25' ROAD LYING WEST OF SAID TRACT 110, BLOCK 45, AND TRACT 15, BLOCK 51; PALM BEACH FARMS COMPANY PLAT No.3, RECORDED IN PLAT BOOK 2, PAGE 45, OF THE PUBLIC RECORDS OF PALM BEACH COUNTY, FLORIDA, LYING IN SECTIONS 18 AND 19, TOWNSHIP 45 SOUTH, RANGE 42 EAST, PALM BEACH COUNTY, FLORIDA

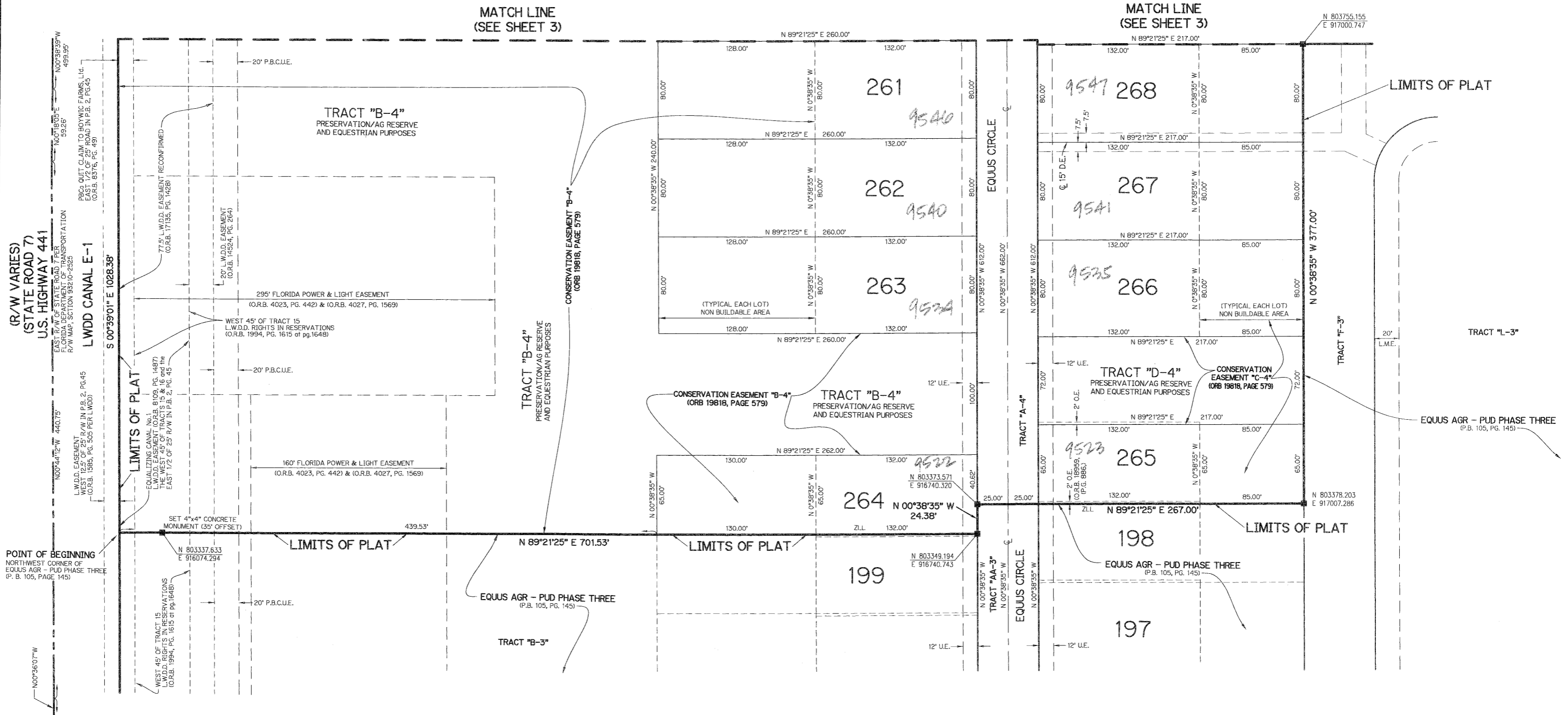
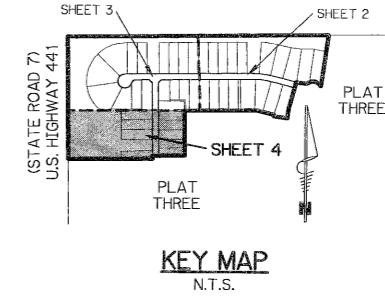
LEGEND:

- - SET PERMANENT REFERENCE MONUMENT, L.B. #6473
- - SET PERMANENT CONTROL POINT, L.B. #6473
- △ - CENTRAL ANGLE
- BE - BUFFER EASEMENT
- CB - CHORD BEARING
- CH - CHORD DISTANCE
- CL - CENTERLINE
- DB - DEED BOOK
- DE - DRAINAGE EASEMENT
- E - ARC LENGTH
- L.A.E. - LIMITED ACCESS EASEMENT
- L.M.A.E. - LAKE MAINTENANCE ACCESS EASEMENT
- L.M.E. - LAKE MAINTENANCE EASEMENT
- L.W.D.D. - LAKE WORTH DRAINAGE DISTRICT
- NR - NOT RADIAL
- N.T.S. - NOT TO SCALE
- O.R.B. - OFFICIAL RECORD BOOK
- O.E. - OVERHANG EASEMENT
- P.B. - PLAT BOOK
- P.C.P. - PERMANENT CONTROL POINT
- P.C.S. - PAGES
- P.O.B. - POINT OF BEGINNING
- P.O.C. - POINT OF COMMENCEMENT
- P.S.M. - PROFESSIONAL SURVEYOR AND MAPPER
- R - RADIUS
- R/W - RIGHT-OF-WAY
- UE - UTILITY EASEMENT
- Z.L. - ZERO LOT LINE
- P.B.C.U.E. - PALM BEACH COUNTY UTILITY EASEMENT
- AGR or AG - AGRICULTURE



SHEET 4 OF 4 APRIL, 2005

BROWN & PHILLIPS, INC.
 CERTIFICATE OF AUTHORIZATION # LB 6473
 901 NORTHPOINT PARKWAY, SUITE 305
 WEST PALM BEACH, FLORIDA 33407
 561-615-3988, 561-615-3986 FAX



SUBMISSION EQUUS AGR - PHASE 4
 BOOK 107 PAGE 104
 RECORDING DATE 1854
 QUARTER B
 SECTION 49
 T4S R4E
 TAB 1000
 PUD NAME